



B-TECH AV MOUNTS MOUNTING SOLUTIONS FOR LG® DISPLAYS

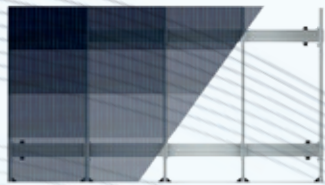


FOR  LG

LAS SERIES LED PANELS

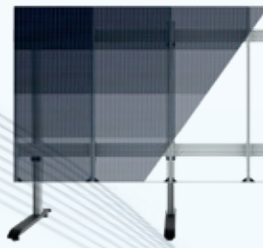
CHOOSE A B-TECH LED MOUNTING SOLUTION
AND CONFIGURE TO SUIT YOUR REQUIREMENTS

- Configurable to suit application
- Front mounted design allows panels to be mounted individually for an easy installation
- Open frame allows panel access for servicing and maintenance
- Mobile version Includes non-marking 4" locking/braked castors
- Integrated cable management for a neat and tidy install



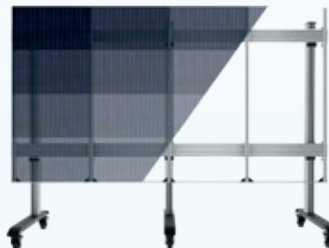
BT9340

WALL MOUNTED



BT9370

FREESTANDING



BT9371

MOBILE



BT9372

BOLT-DOWN



FOR  LG

LAA015F 130" ALL-IN-ONE DISPLAY

CHOOSE FROM OUR RANGE OF SPECIFICALLY
DESIGNED FLOOR STANDS

- Pre-configured to suit LAA015F for fast assembly
- Front mounted design allows panels to be mounted individually for an easy installation
- Open frame allows panel access for servicing and maintenance
- Mobile version Includes non-marking 4" locking/braked castors
- Integrated cable management for a neat and tidy install



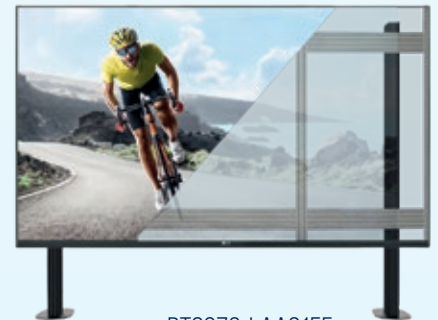
BT9370-LAA015F

FREESTANDING



BT9371-LAA015F

MOBILE



BT9372-LAA015F

BOLT-DOWN



FOR LG LAS SERIES LED PANELS

BT9340

UNIVERSAL DIRECT VIEW LED VIDEOWALL MOUNT

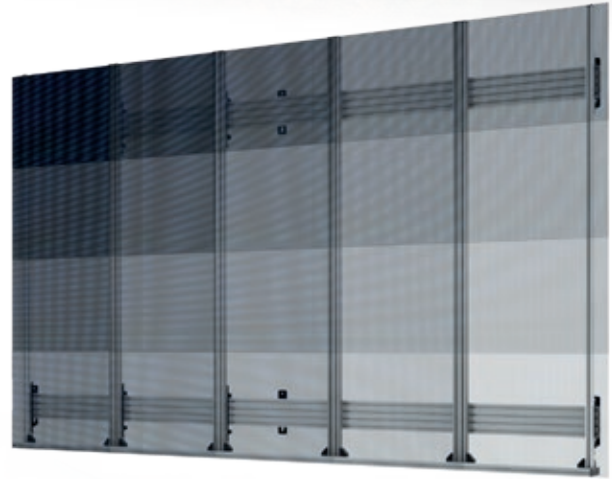
The BT9340 is a wall mounted solution suitable for LG® LAS series LED panels. As part of B-Tech's System X Range, the BT9340 is part of a universal mounting system for use in several formats; wall mounted, trolley, freestanding and bolt down. An LED configuration tool allows BT9340 requirements to be specified online and features a quote request option which means pricing can be provided quickly. Orders placed can then be fulfilled with short lead times thanks to our extensive stock of off-the-shelf B-Tech components.

SPECIFICATION

Panel fixing method	Front mounted
Colour	Black or Silver
For indoor use only	

FEATURES

- Configurable mounting solution available to order to your requirements, from stock - see configurator for info
- Universal design suitable for a variety of configurations
- Assembled from off-the-shelf components for fast order fulfilment
- Online configuration tool for quick turnaround of quotes - no more lengthy wait for bespoke pricing from custom manufacturing
- System can be extended to any required width for large installations
- Open frame allows panel access for easy servicing and maintenance
- Pre-assembly of major parts for quick and easy installation
- All mounting hardware included



Scalable to any width



Front mounted solution for easy installation



Bottom ledge supports screen and aids install alignment

CONFIGURE ONLINE



Specify your configuration online to get an order reference code and receive a quotation



Try now at www.btechavmounts.com/led-panel-configurator



B-TECH AV MOUNTS

BT9370

FREESTANDING UNIVERSAL DIRECT VIEW LED VIDEOWALL STAND

FOR LG
LAS SERIES
LED PANELS

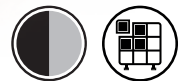
The BT9370 is a freestanding mounting solution suitable for LG® LAS series LED panels. As part of B-Tech's System X Range, the BT9370 is part of a universal mounting system for use in several formats; wall mounted, trolley, freestanding and bolt down. An LED configuration tool allows BT9370 requirements to be specified online and features a quote request option which means pricing can be provided quickly. Orders placed can then be fulfilled with short lead times thanks to our extensive stock of off-the-shelf B-Tech components.

SPECIFICATION

Panel fixing method	Front mounted
Colour	Black or Silver
For indoor use only	

FEATURES

- Configurable mounting solution available to order to your requirements, from stock - see configurator for info
- Universal design suitable for a variety of configurations
- Assembled from off-the-shelf components for fast order fulfilment
- Online configuration tool for quick turnaround of quotes - no more lengthy wait for bespoke pricing from custom manufacturing
- Adjustable levelling feet to accommodate uneven floor surfaces
- System can be extended to any required width for large installations
- Open frame allows panel access for easy servicing and maintenance
- Pre-assembly of major parts for quick and easy installation
- All mounting hardware included



Adjustable levelling feet to accommodate uneven floor surfaces



Front mounted solution for easy installation



Bottom ledge supports screen and aids install alignment

CONFIGURE ONLINE



Specify your configuration online to get an order reference code and receive a quotation



Try now at www.btechavmounts.com/led-panel-configurator



FOR LG LAS SERIES LED PANELS

BT9371

MOBILE UNIVERSAL DIRECT VIEW LED VIDEOWALL STAND

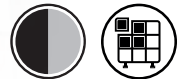
The BT9371 is a mobile mounting solution suitable for LG® LAS series LED panels. As part of B-Tech's System X Range, the BT9371 is part of a universal mounting system for use in several formats; wall mounted, trolley, freestanding and bolt down. An LED configuration tool allows BT9371 requirements to be specified online and features a quote request option which means pricing can be provided quickly. Orders placed can then be fulfilled with short lead times thanks to our extensive stock of off-the-shelf B-Tech components.

SPECIFICATION

Panel fixing method	Front mounted
Colour	Black or Silver
For indoor use only	

FEATURES

- Configurable mounting solution available to order to your requirements, from stock - see configurator for info
- Universal design suitable for a variety of configurations
- Assembled from off-the-shelf components for fast order fulfilment
- Online configuration tool for quick turnaround of quotes - no more lengthy wait for bespoke pricing from custom manufacturing
- System can be extended to any required width for large installations
- Open frame allows panel access for easy servicing and maintenance
- Includes non-marking 4" locking/braked castors
- Pre-assembly of major parts for quick and easy installation
- All mounting hardware included



Includes non-marking 4" locking/braked castors



Front mounted solution for easy installation



Bottom ledge supports screen and aids install alignment

CONFIGURE ONLINE



Specify your configuration online to get an order reference code and receive a quotation



Try now at www.btechavmounts.com/led-panel-configurator



FOR LG LAS SERIES LED PANELS

BT9372

BOLT DOWN UNIVERSAL DIRECT VIEW LED VIDEOWALL STAND

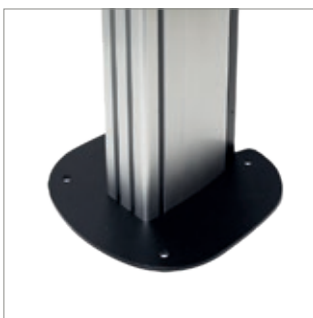
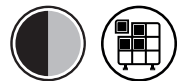
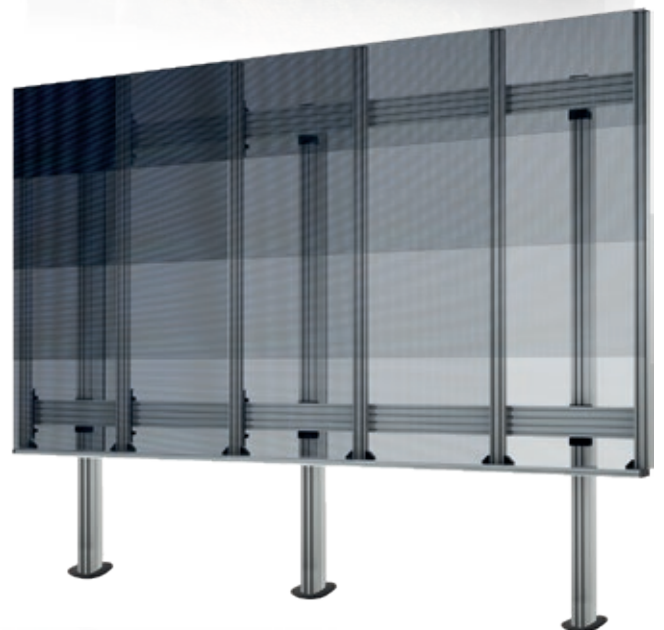
The BT9372 is a bolt-down mounting solution suitable for LG® LAS series LED panels. As part of B-Tech's System X Range, the BT9372 is part of a universal mounting system for use in several formats; wall mounted, trolley, freestanding and bolt down. An LED configuration tool allows BT9372 requirements to be specified online and features a quote request option which means pricing can be provided quickly. Orders placed can then be fulfilled with short lead times thanks to our extensive stock of off-the-shelf B-Tech components.

SPECIFICATION

Panel fixing method	Front mounted
Colour	Black or Silver
For indoor use only	

FEATURES

- Configurable mounting solution available to order to your requirements, from stock - see configurator for info
- Universal design suitable for a variety of configurations
- Assembled from off-the-shelf components for fast order fulfilment
- Online configuration tool for quick turnaround of quotes - no more lengthy wait for bespoke pricing from custom manufacturing
- System can be extended to any required width for large installations
- Open frame allows panel access for easy servicing and maintenance
- Small footprint for an unobtrusive installation into confined areas
- Pre-assembly of major parts for quick and easy installation
- All mounting hardware included



Low profile bolt down base



Front mounted solution for easy installation



Bottom ledge supports screen and aids install alignment

CONFIGURE ONLINE



Specify your configuration online to get an order reference code and receive a quotation



Try now at www.btechavmounts.com/led-panel-configurator



FOR LG
LAA015F 130"
 ALL-IN-ONE LED
 SCREEN



BT9370-LAA015F

FLOOR STAND

FOR LG 130" ALL-IN-ONE LED SCREEN

The BT9370-LAA015F is a freestanding mounting solution designed specifically for LG LAA015F 130" All-in-One LED Screen. A high-end aesthetic, anodised aluminium finish and integrated cable management ensures a smart and stylish installation which is quick and simple to install.

SPECIFICATION

Panel fixing method	Front mounted
Colour (columns)	Black or Silver
Colour (mounting frame)	Silver
For indoor use only	

FEATURES

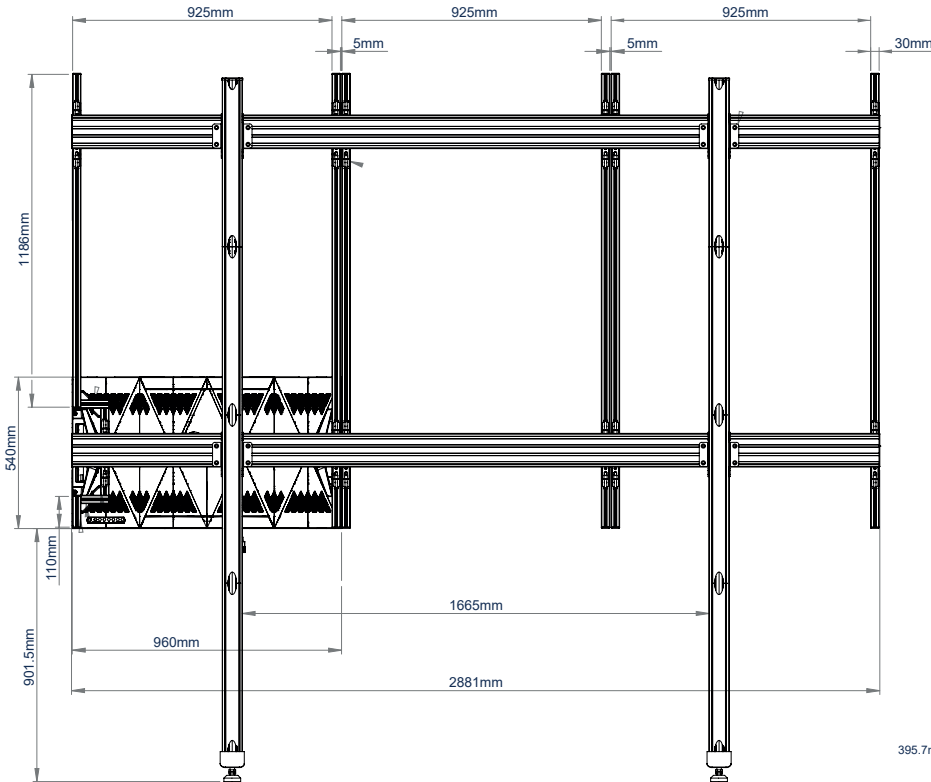
- Designed and configured specifically for LG LAA015F
- Front mounted design allows panels to be mounted individually for an easy installation
- Open frame allows panel access for servicing and maintenance
- Adjustable levelling feet to accommodate uneven floor surfaces
- Integrated cable management for a neat and tidy install
- Mobile and bolt-down versions also available
- All mounting hardware included



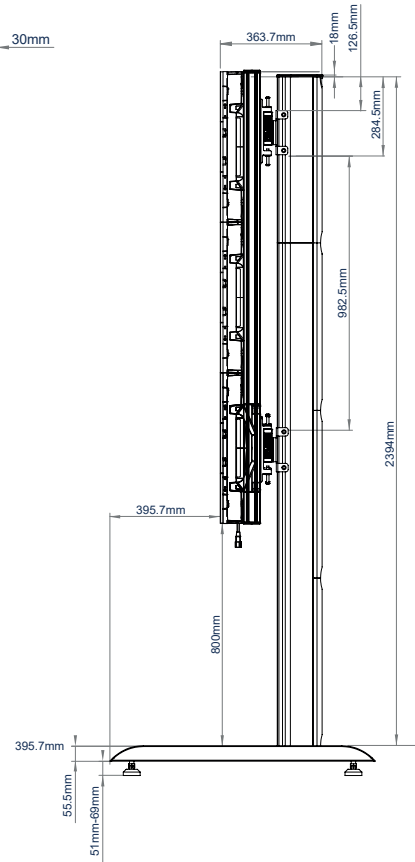
Front mounted solution for easy installation



Adjustable levelling feet to accommodate uneven floor surfaces



REAR VIEW



SIDE VIEW

PACKING INFORMATION

COLOUR:	ORDER REF:	EAN CODE:
Black Base with Silver Columns	BT9370-LAA015F/BS	5019318302787
Black Base with Black Columns	BT9370-LAA015F/BB	5019318302794

ACCESSORIES AND RELATED PRODUCTS

BT9371-LAA015F



Mobile Stand
for LG 130" All-in-One LED Display

BT9372-LAA015F



Bolt Down Stand
for LG 130" All-in-One LED Display

BT7882



AV Cradle can be attached directly to columns or rails to house AV and IT hardware and cabling

BT7032



Large AV Accessory Shelf can be attached directly to columns or rails to hold AV equipment up to 7.5kg



FOR LG
LAA015F 130"
 ALL-IN-ONE LED
 SCREEN

BT9371-LAA015F

MOBILE STAND

FOR LG 130" ALL-IN-ONE LED SCREEN



The BT9371-LAA015F is a mobile mounting solution designed specifically for LG LAA015F 130" All-in-One LED Screen. A high-end aesthetic, anodised aluminium finish and integrated cable management ensures a smart and stylish installation which can be re-located easily and safely without marking or scuffing floor surfaces.

SPECIFICATION

Panel fixing method	Front mounted
Colour (columns)	Black or Silver
Colour (mounting frame)	Silver

For indoor use only

FEATURES

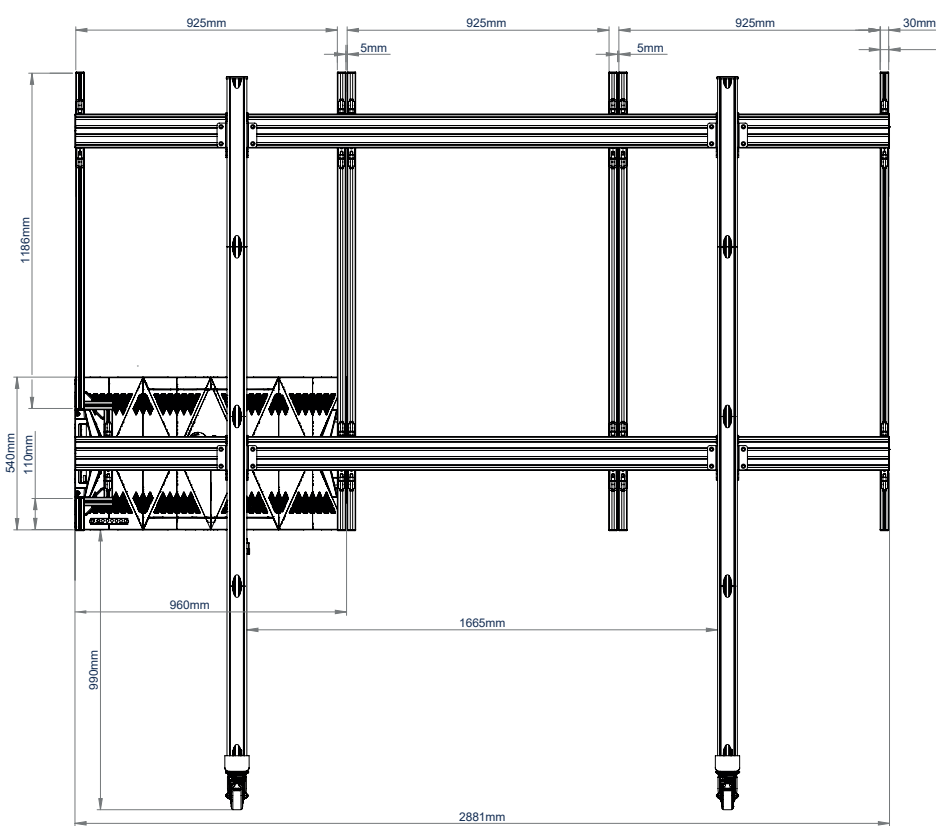
- Designed and configured specifically for LG LAA015F
- Front mounted design allows panels to be mounted individually for an easy installation
- Open frame allows panel access for servicing and maintenance
- Includes non-marking 4" locking/braked castors
- Also includes adjustable levelling feet for static, freestanding installations
- Integrated cable management for a neat and tidy install
- Freestanding and bolt-down versions also available
- All mounting hardware included



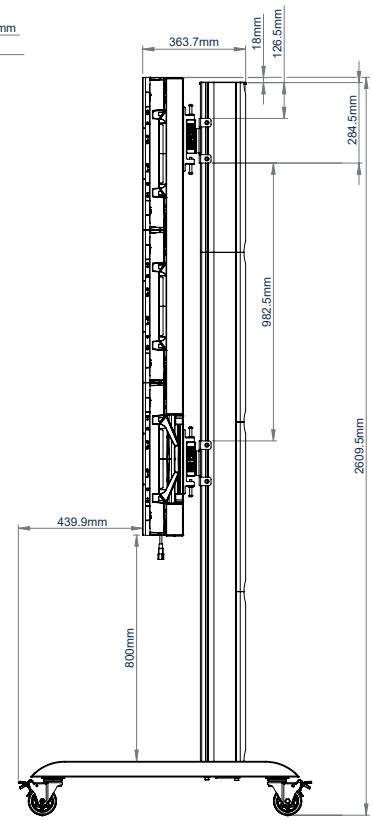
Front mounted solution for easy installation



Includes non-marking 4" locking/braked castors



REAR VIEW



SIDE VIEW

PACKING INFORMATION

COLOUR:	ORDER REF:	EAN CODE:
Black Base with Silver Columns	BT9371-LAA015F/BS	5019318302800
Black Base with Black Columns	BT9371-LAA015F/BB	5019318302817

ACCESSORIES AND RELATED PRODUCTS

BT9370-LAA015F



Freestanding Mount
for LG 130" All-in-One LED Display

BT9372-LAA015F



Bolt Down Stand
for LG 130" All-in-One LED Display

BT7882



AV Cradle can be attached directly to columns or rails to house AV and IT hardware and cabling

BT7032



Large AV Accessory Shelf can be attached directly to columns or rails to hold AV equipment up to 7.5kg



FOR LG
LAA015F 130"
 ALL-IN-ONE LED
 SCREEN

BT9372-LAA015F

BOLT DOWN STAND

FOR LG 130" ALL-IN-ONE LED SCREEN



The BT9372-LAA015F is a bolt down mounting solution designed specifically for LG LAA015F 130" All-in-One LED Screen. A high-end aesthetic, anodised aluminium finish and integrated cable management ensures a smart and stylish installation which fixes securely to the floor providing a rigid structure.

SPECIFICATION

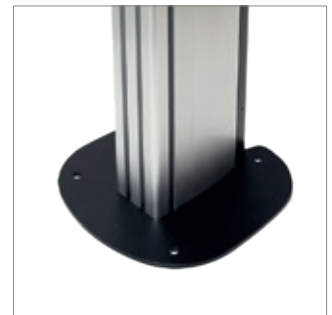
Panel fixing method	Front mounted
Colour (columns)	Black or Silver
Colour (mounting frame)	Silver
For indoor use only	

FEATURES

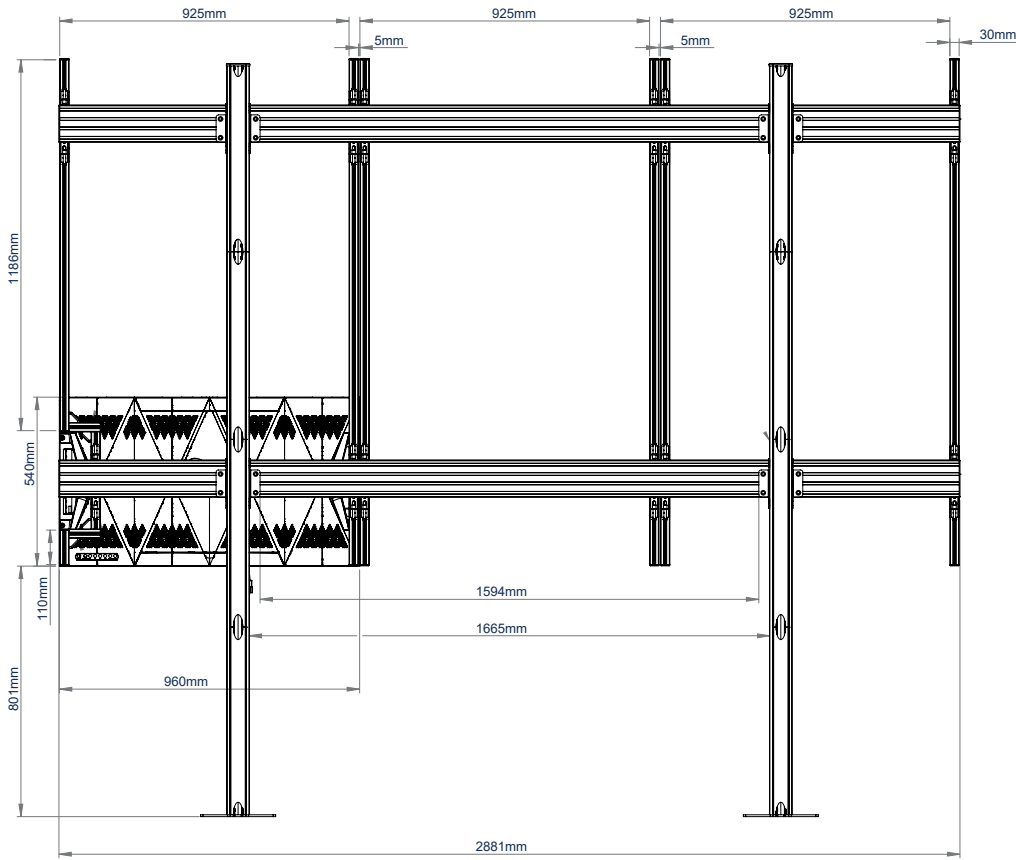
- Designed and configured specifically for LG LAA015F
- Front mounted design allows panels to be mounted individually for an easy installation
- Open frame allows panel access for servicing and maintenance
- Integrated cable management for a neat and tidy install
- Freestanding and mobile versions also available
- All mounting hardware included



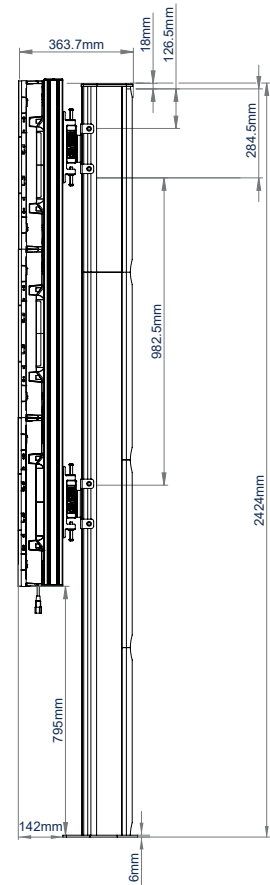
Front mounted solution for easy installation



Low profile bolt down base



REAR VIEW



SIDE VIEW

PACKING INFORMATION

COLOUR:	ORDER REF:	EAN CODE:
Black Base with Silver Columns	BT9372-LAA015F/BS	5019318302824
Black Base with Black Columns	BT9372-LAA015F/BB	5019318302831

ACCESSORIES AND RELATED PRODUCTS

BT9370-LAA015F



Freestanding Mount
for LG 130" All-in-One LED Display

BT9371-LAA015F



Mobile Stand
for LG 130" All-in-One LED Display

BT7882



AV Cradle can be attached directly to columns or rails to house AV and IT hardware and cabling

BT7032



Large AV Accessory Shelf can be attached directly to columns or rails to hold AV equipment up to 7.5kg